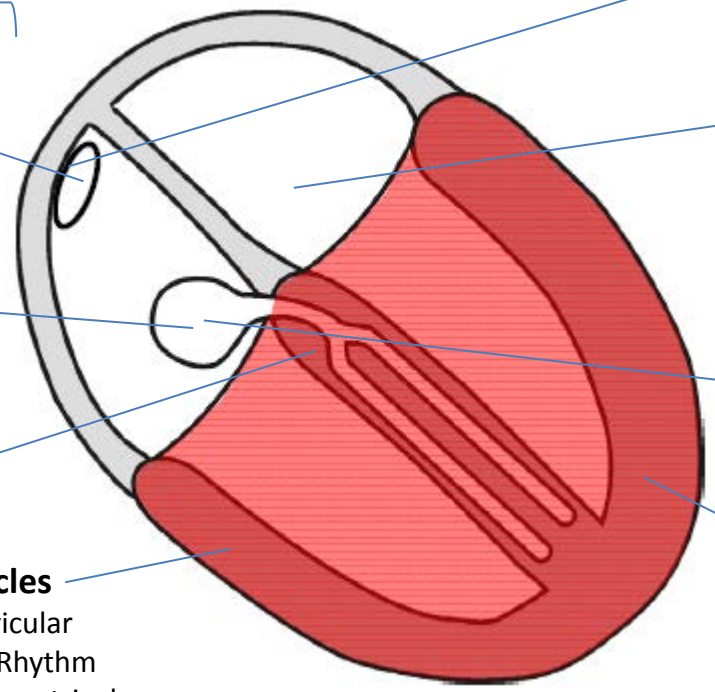


# Anatomical DDx for arrhythmias

## Tachy-arrhythmias (ventricular rate > 100 bpm)

## Brady-arrhythmias (ventricular rate < 60 bpm)



**SA node**  
 → Sinus bradycardia  
 → Sick Sinus Syndrome (SSS)

**AV node**  
 → Junctional escape rhythm  
 → Conduction blocks (1<sup>o</sup>, 3<sup>o</sup>, and Type I 2<sup>o</sup>)

**His-purkinje system**  
 → Conduction blocks (1<sup>o</sup>, 3<sup>o</sup>, and Type II 2<sup>o</sup>)

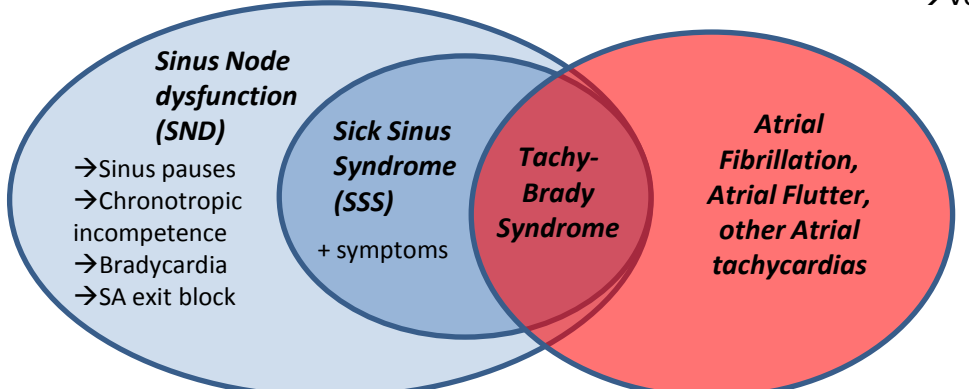
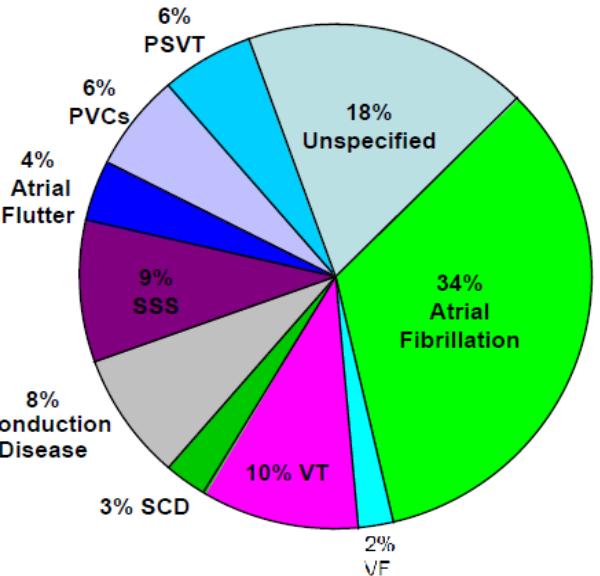
**Ventricles**  
 → Ventricular Escape Rhythm (i.e. idioventricular rhythm)

**SA node**  
 → Sinus tachycardia

**Atria**  
 → Premature Atrial Contractions (PACs)  
 → Atrial Flutter (AFL)  
 → Atrial Fibrillation (AF)  
 → Paroxysmal supraventricular tachycardias (PST)  
 → Focal Atrial Tachycardia (FAT)  
 → Multifocal Atrial Tachycardia (MAT)

**AV node**  
 → AV re-entrant tachycardia (AVRT)  
 → AV nodal re-entrant tachycardia (AVNRT)

**Ventricles**  
 → Premature Ventricular Contractions (PVC)  
 → Ventricular tachycardia (V-tach, VT)  
     • Monomorphic VT  
     • Polymorphic VT (i.e. Torsades de Pointes)  
 → Ventricular Fibrillation (V-Fib, VF)



→ More than 3 Premature beats in a row = "arrhythmia"